

USES OF OUR PRODUCTS



1625 Miami St., South Bend, IN 46613

888-698-8705, fax 574-234-2240

www.masonrycosmetics.com



© 2013 ALL RIGHTS RESERVED

Blend Repaired Brick

This brick home was damaged by the impact of a car and the original brick were no longer manufactured. The contractor found the closest match in size and texture however the color was not close. The repaired area is now invisible.





Match Replaced Brick

Water damaged this wall so the brick had to be replaced.



Match Mortar and brick

The garage door was replaced with a wall, now it just disappears.



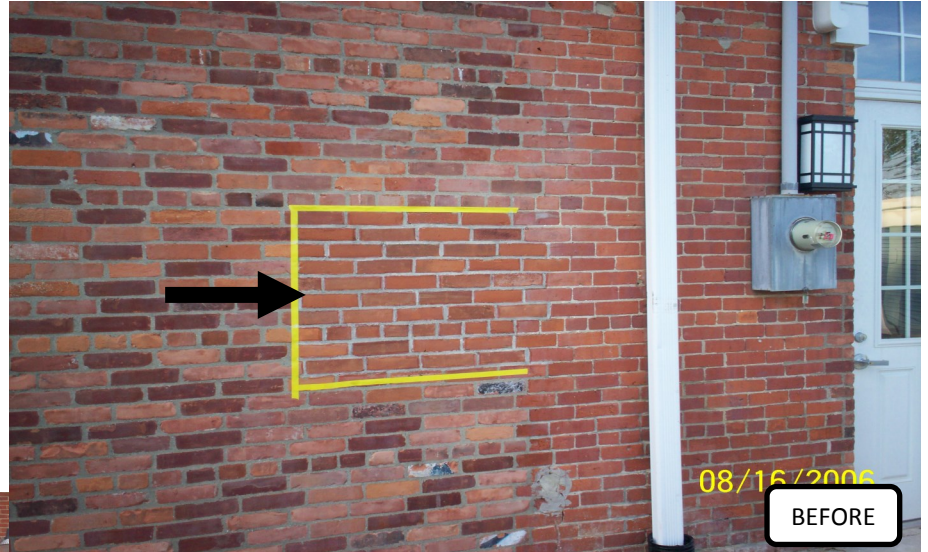


Enhance Curb Appeal



Restore

Test area is taped off.
After approval, this area
is expanded over the
entire wall.



We can help you with all your
restoration projects!

Our color specialist is starting to
develop the color for a sample
panel which was requested by the
building owner.

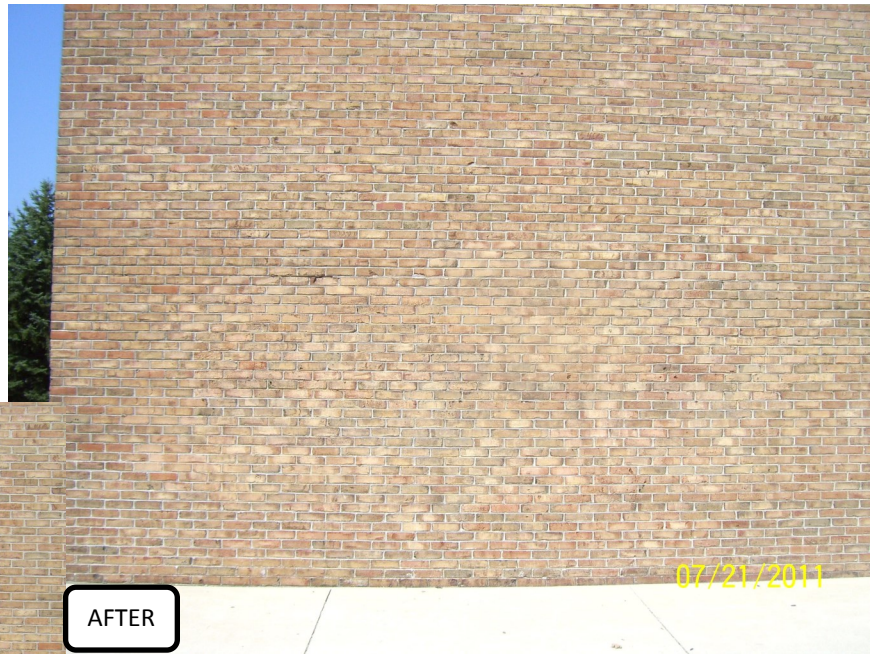
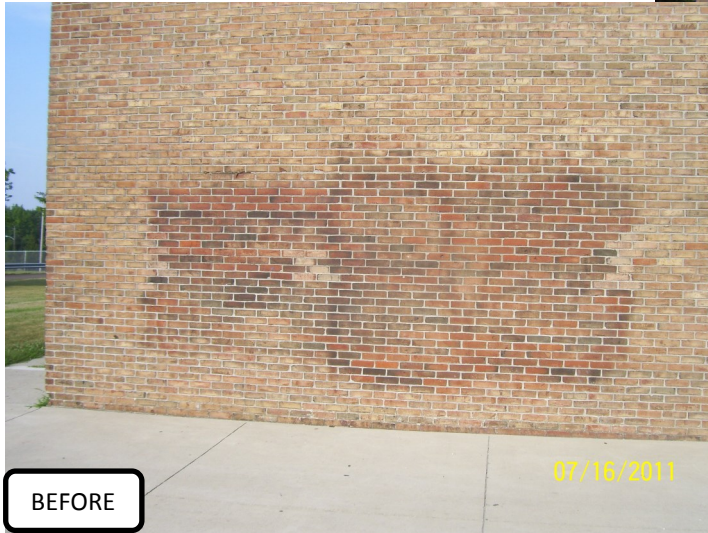


Sample panel complete.

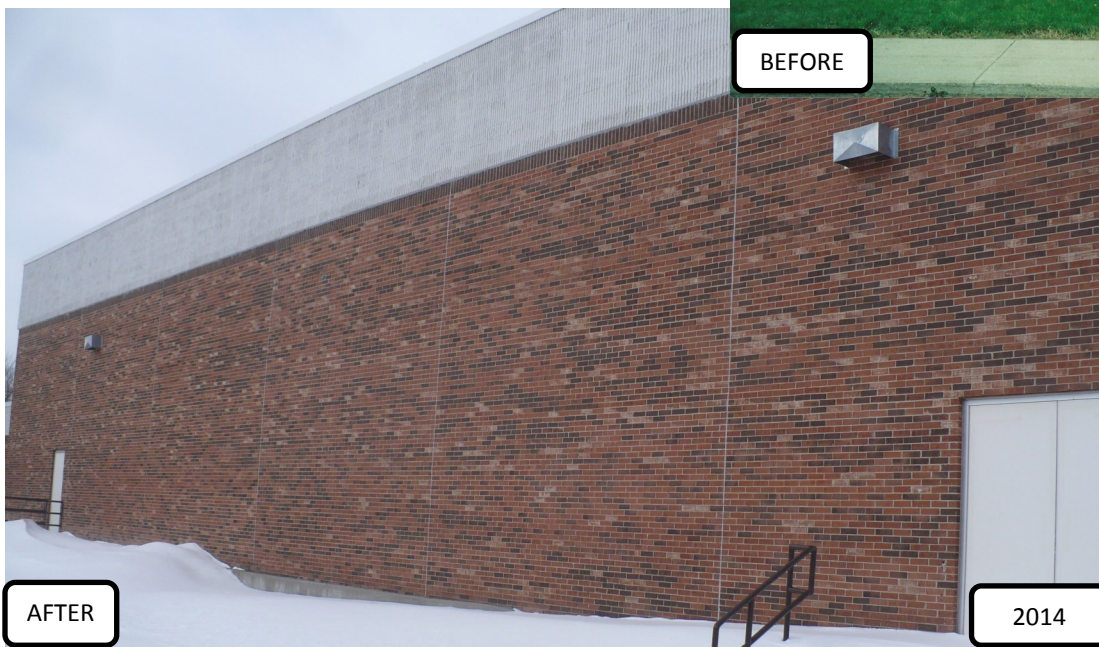


Conceal Graffiti

The wall was damaged by harsh cleaning while trying to removing graffiti.



Anchor Bay High School,
New Baltimore, MI—2002

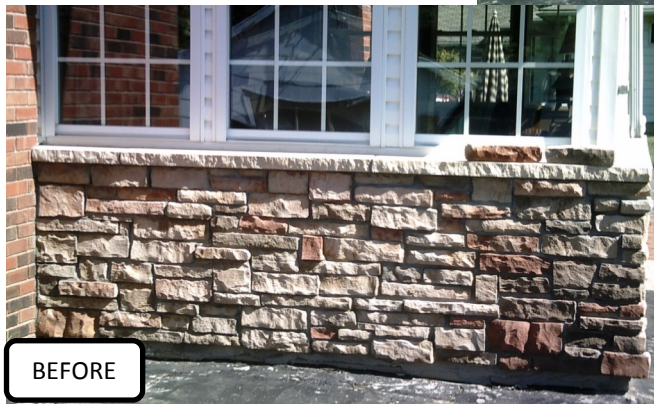


Power washing
blasted the faces off
these brick but with
color correction,
it looks good as new,
even 12 years later.



Restore Color

Manufactured Stone
damaged by improper
cleaning removing the
product's color.



Enhance Natural Stone

Stone can be changed to
either, blend or contrast.





Match Block

The corner block did not match the wall block, now they do.



Church,
Lansing, MI—2000

Block on this church was stained in 2000, still looks great after 14 years.



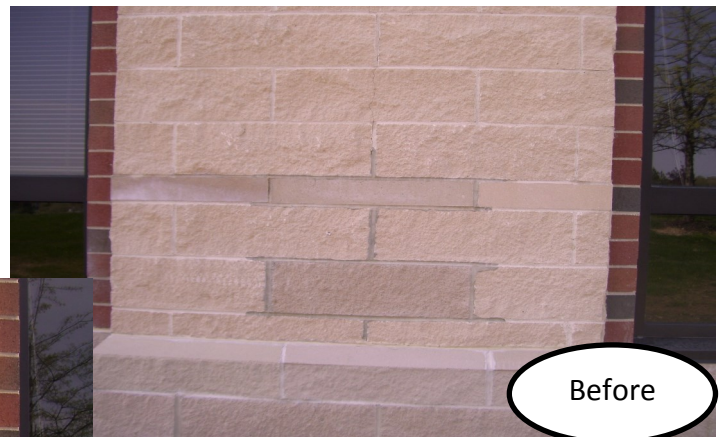
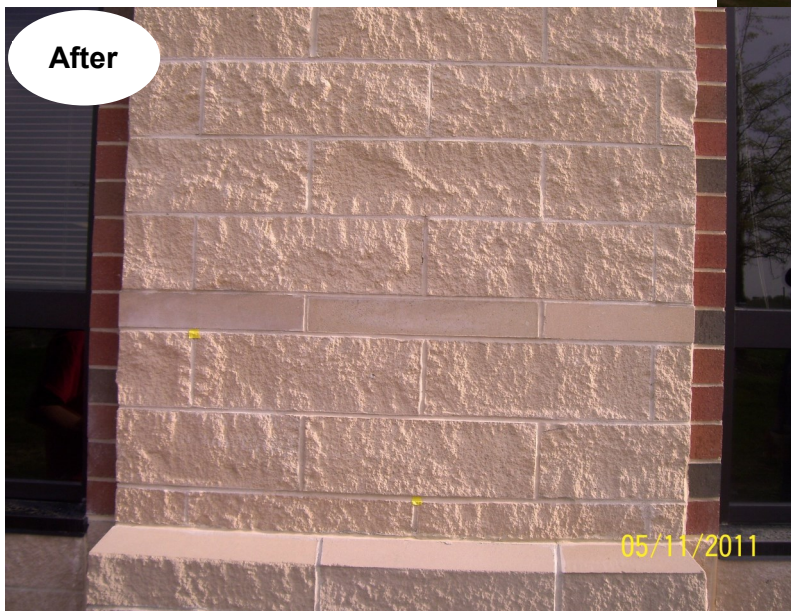
Correct Architectural Block

Two different runs of buff colored stone where laid in this wall.



Left untouched to see before & after

Blend Block & Mortar



Three pieces of architectural block were damaged and had to be replaced.



Blend



Poorly blended wall with areas of unwanted light brick.



Color Correct

Meridian Mall,
Okemos, MI—2001

A 100,000 brick addition was constructed in 2001. The original brick were no longer made. MCI worked with the brick dealer who found a good donor brick from Belden Brick Co. and then stained the new to match the existing.



Still The Best after 13 years.

